


Installation Instructions: Converter

Code: 06836/39/40/42/46/47

Date	Revision
19.05.26	3

Read these instructions before installation and retain for future reference 

This equipment should be installed by a competent electrician

Important Information

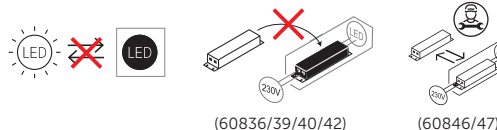
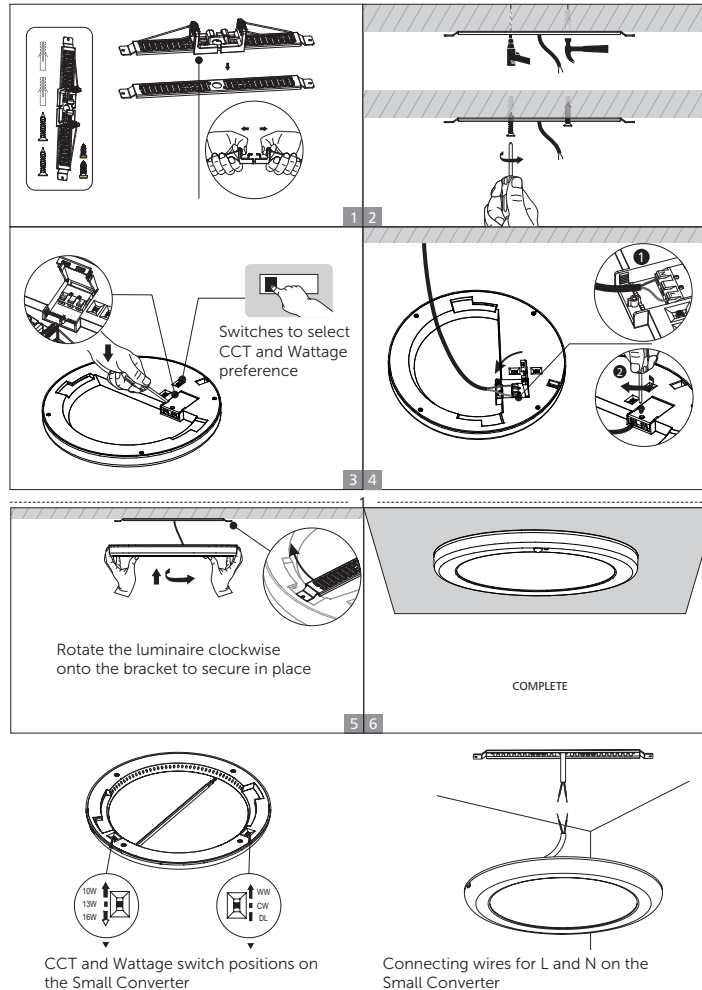
We recommend that luminaires are installed by a qualified electrician ensuring the installation complies with current IEE wiring regulations & local building control.

- On emergency fittings, all tests should be carried out in accordance with current emergency lighting regulations.
- BELL Lighting will not accept responsibility for any claims arising from poor installation.
- The operating temperature should be between -20°C and 35°C, and 0°C to 35°C for emergency fittings.
- Always switch off mains supply before installing.
- Upgrading of MCB may be necessary.
- Mount to a stable, secure surface that is rated for the weight of the luminaire.
- Do not cover with insulation, ensure there is adequate free air ventilation around the fitting.
- Not suitable for ATEX hazardous zones (explosive atmospheres).
- Indoor use only, not suitable for outdoor use or areas of high humidity.
- To ensure optimum performance, keep the front diffuser clean. Wipe with a soft, damp lint free cloth. Do not use soaps, detergents, solvents or abrasive materials.
- On emergency versions, only use battery as supplied.
- On emergency versions, allow the battery to fully charge for 24 hours before performing the initial discharge test.
- If the lighting fails within 3 hours of an emergency discharge test, the battery is to be replaced. Contact your local distributor for a suitable replacement.
- Not intended for use by children.
- The light source of this luminaire is not replaceable, when the light source reaches end of life, the whole luminaire must be replaced.

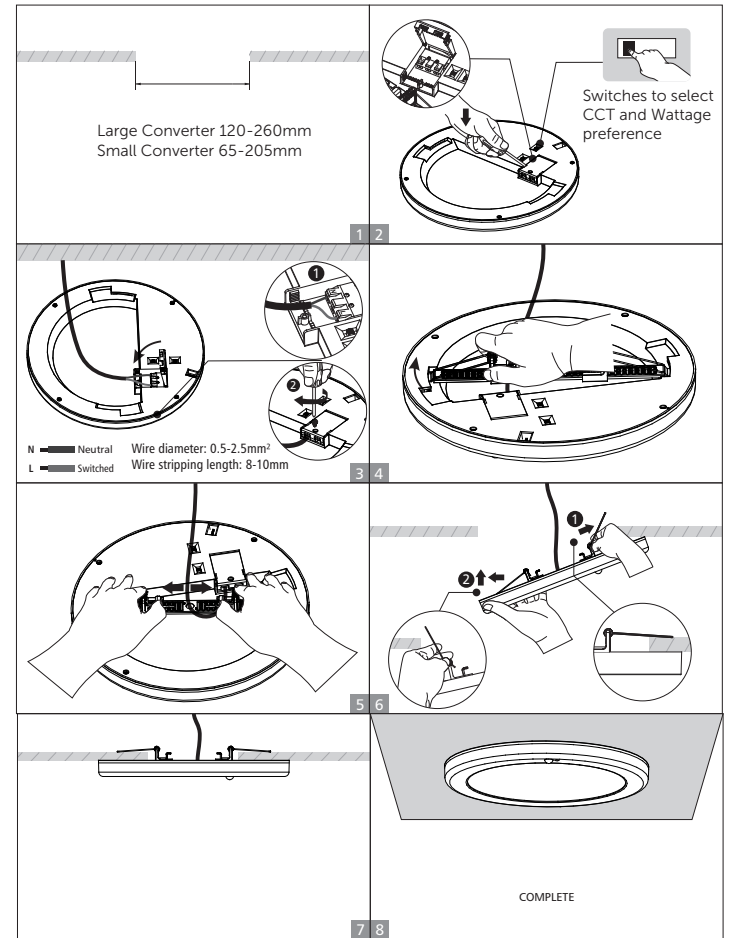
This product may contain substances that can be hazardous to the environment if not disposed of properly. Electrical and electronic equipment should never be disposed of with general household waste but must be separated for its correct treatment and recovery. Where possible, recycle your packaging.



Surface mount installation



Recessed into ceiling



This luminaire contains a light source with Energy Rating E

British Electric Lamps Ltd
BELL House, Foxbridge Way, Normanton Industrial Estate
Normanton, West Yorkshire. WF6 1TN

BELL Ireland
Marina House, Clarence Street, Dun Laoghaire
County Dublin, Ireland, A96 AX76

T: +44 (0)1924 893380 F: +44 (0)1924 894320
E: sales@belllighting.co.uk

www.belllighting.co.uk

Technical Helpline +44 (0)1924 893380

Technical@belllighting.co.uk

Installation Instructions: Converter

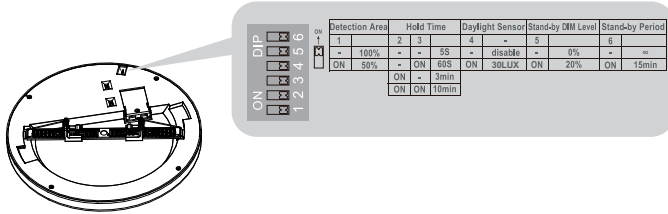
Code: 06836/39/40/42/46/47

Date	Revision
19.05.26	3

Read these instructions before installation and retain for future reference
 This equipment should be installed by a competent electrician



Daylight & PIR Sensor



Factory setting



Sensor Setting

Detection area:
 Detection area can be reduced by selecting the combination on the DIP switches to fit precisely each application.
 Notice 1 : The distance test is carried out under Ta25°C, 2.5 meters surface/1.8 meters wall mounting installation height. The test result is based on the movement along the tangential direction of the sensor, and the detect distance can be adjusted by the dial switch.
 Notice 2 : Infrared sensor will be affected by temperature. Too high or too low temperature may affect the detect distance or even cause failure to sensor.

Detection Area
1
- 100%
ON 50%

Hold Time

2	3
-	5S
ON	60S
ON	3min
ON	10min

Hold time:
 Refers to the time period the lamp remains at 100% illumination after no motion detected.
 Notice 1: The hold time can be selected by the slide switch.
 The hold time counting should be started after the sensor is powered on and initialized.

Daylight sensor
 The sensor can be set to only allow the lamp to illuminate below a defined ambient brightness threshold. When set to Disable mode, the daylight sensor will switch on the lamp when motion is detected regardless of ambient light level.
 Notice 1 : The light threshold can be selected through the slide switch, it may cause a large deviation in different lamps.

Daylight Sensor
4
- disable
ON 30lux

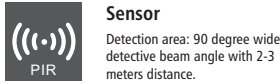
Stand-by DIM Level
 This is the dimmed low light output level you would like to have after the hold-time in the absence of people.

5
- 0%
ON 20%

Stand-by period
 This is the time period you would like to keep at the low light output level before it is completely switched off in the long absence of people.

6
- ∞
ON 15min

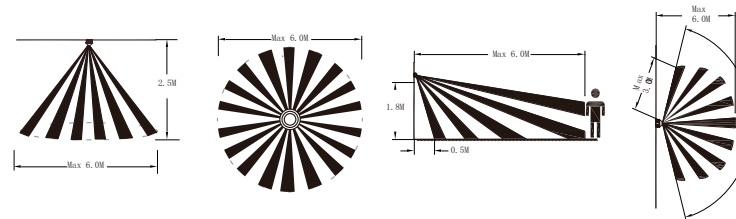
Functions Instruction (For specific function, please refer to actual model)



Driver Datasheet (Sensor)

Sensor datasheet	
Operating Voltage	DC6-10V
Power consumption	0.2Wmax
Microwave frequency	-
Transmission power	-
Detection angle	90°
Detection Area	3m (50%/100% Range adjustable)
Hold time	5s/60s/3min/10min adjustable
Daylight sensor	30Lux/Disable Mode adjustable
Stand-by DIM Level	0%/20% Mode adjustable
Stand-by Period	15min/∞ Adjustable
Dimming Range	NO
PIR On/Off Function	After powering on for 40 seconds, do ON-OFF-ON-OFF in 2 seconds, the lamp will flash once, the sensor function will be returned off and lamp will enter into normal constant light status (No memory function). If power off over 2 seconds under constant light mode, the lamp will back to sensor status.
Installation Height	Recommended wall installation height 1.8m, ceiling installation height 2.5m.
Operating temperature(°C)	-20°C~40°C

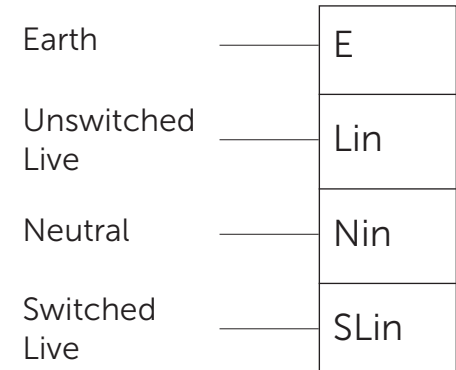
Induction Range



Wiring of Emergency Version Aerial Converters (06846/06847)

Emergency version Aerial Converters utilise non-integrated driver and emergency pack.

Connections to the emergency converter are



British Electric Lamps Ltd
 BELL House, Foxbridge Way, Normanton Industrial Estate
 Normanton, West Yorkshire. WF6 1TN

BELL Ireland
 Marina House, Clarence Street, Dun Laoghaire
 County Dublin, Ireland, A96 AX76

T: +44 (0)1924 893380 F: +44 (0)1924 894320
 E: sales@belllighting.co.uk

www.belllighting.co.uk

Technical Helpline +44 (0)1924 893380

Technical@belllighting.co.uk

Testing & Commissioning for Emergency Luminaire

- Ensure the Load is connected.
- Connect the battery.
- Switch on the Unswitched Supply
- Check the Charge LED illuminates.
- Switch on the Maintained Supply
- Check the LED illuminates as normal.
- Switch off the Maintained Supply.
- Switch off the Unswitched Supply
- Check the Charge LED extinguishes and the load LED illuminates at a reduced output.
- Enter the commissioning date on the Battery Pack.
Switch on the Unswitched Supply

Luminaire Ref/Location		In Case of difficulty, contact the Installation Engineers:- Tel: _____								
Full Recharge Time 24 Hours		Duration 3 Hours			Lamp Type - LED					
ROUTINE TEST RECORD										
Monthly Test	Year 1		Year 2		Year 3		Year 4		Year 5	
	Signed	Date	Signed	Date	Signed	Date	Signed	Date	Signed	Date
Functional										
Functional										
Functional										
Functional										
Functional										
Functional										
Functional										
Functional										
Functional										
Functional										
Functional										
Three Hour										

British Electric Lamps Ltd
 BELL House, Foxbridge Way, Normanton Industrial Estate
 Normanton, West Yorkshire. WF6 1TN

BELL Ireland
 Marina House, Clarence Street, Dun Laoghaire
 County Dublin, Ireland, A96 AX76

T: +44 (0)1924 893380 F: +44 (0)1924 894320
 E: sales@belllighting.co.uk

www.belllighting.co.uk

Technical Helpline +44 (0)1924 893380

Technical@belllighting.co.uk